


Grove

163m² 

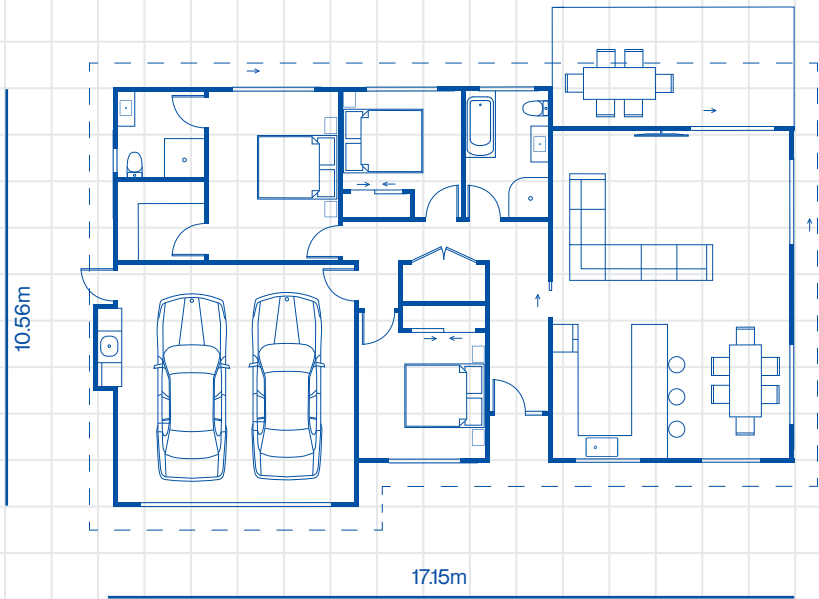
3  1  2  2 

Features:

- Brick and weatherboard cladding
- Open plan kitchen, dining and living room
- Family bathroom with bathtub
- Covered North-facing patio
- Double internal access garage
- Heat pump

Upgrades can include:

- Gable roofline
- Added weatherboard feature cladding
- Ensuite with tiled wet floor shower



© McBrimar